



MINERVA

USB 3.1 Gen 2 for 2.5" SATA, mSATA SSD & M.2 SSD with type-C

Performance & Burn In Test Rev. 1.0 for 2.5" SATA SSD

Table of Contents

1. Overview

2. Performance Measurement Tools and Results
 - 2.1 Test Platform
 - 2.2 Test target and use 2.5" 128GB SATA SSD
 - 2.3 Install Hardware
 - 2.4 BIOS & Windows 10 OS environment setup
 - 2.5 CrystalDiskMark 5.1.2 x64 performance test
 - 2.6 AS SSD Benchmark 1.9 performance test
 - 2.7 ATTO Disk Benchamrk 2.47 performance test
 - 2.8 AnvilBenchmark_V110_B337 Benchmark performance test

3. Burn In Tests and Results
 - 3.1 BurnInTestv8.1 Pro burn in test

4. Summary

USB 3.1 type-C for 2.5" SATA, mSATA SSD & M.2 SSD adapter

1. Overview

U6335A adapter, built-in USB3.1 type-C connectors, provides one SATA connector, one M.2 B-key connector and one Mini PCI-e connector. First inserts 2.5" SATA SSD, using USB A-type to type-C cable to connect to the host, 2.5" SATA SSD can work.

2. Tools and Results of Performance Measurement

2.1 Test Platform

M/B : ASUS [X99-PRO/USB3.1](#)

CPU : Intel [i7-5820K](#), 3.3GHz/ 15M Cache/ LGA2013-v3

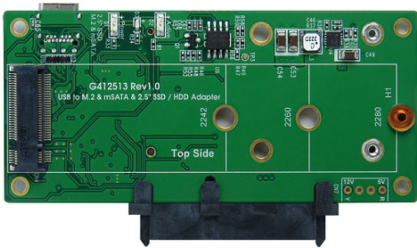
Memory : ADATA DDR4 PC4-1700MHz, [8GB](#)(4GB DIMM*2)

ATX Power : COOLER MASTER G750M, [750W ATX](#), 12V V2.31 Power Supply

Graphic : ATI Radeon [HD Graphics 5450](#) Graphics Processor

OS : Microsoft [Windows 10 64bit OS](#)

2.2 Test target: U6335A adapter and [Crucial 2.5" 128GB\(CT128M550SSD1\)](#)



U6335A Adapter



USB 3.1 A to C type Cable



Crucial M550 128GB SSD

2.3 Install Hardware

Inserts 2.5" SATA SSD into U6335A adapter, Then this adapter through USB cable to connect to USB3.1 port of ASUS [X99-PRO/USB3.1](#)

2.4 BIOS & Windows 10 OS environment setup

2.4.1 Install Windows 10 64bit OS.

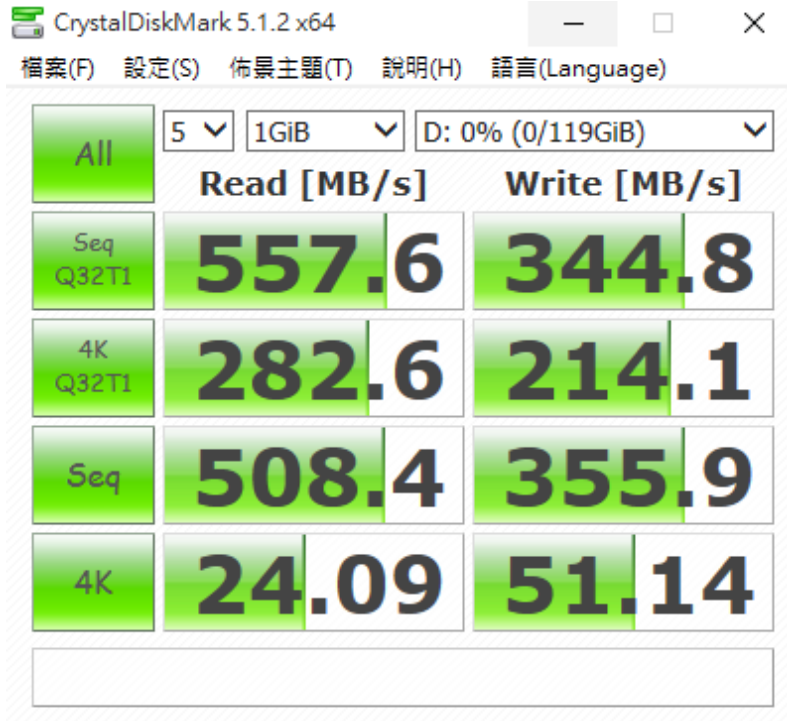
2.4.2 In Windows 10, U6335A enclosure is formatted to NTFS Mode. Don't install any program.

USB 3.1 type-C for 2.5" SATA, mSATA SSD & M.2 SSD adapter

2.5 CrystalDiskMark 5.1.2 x64 performance test

※Benchmark (Sequential **Read & Write** / default = **1MB**)

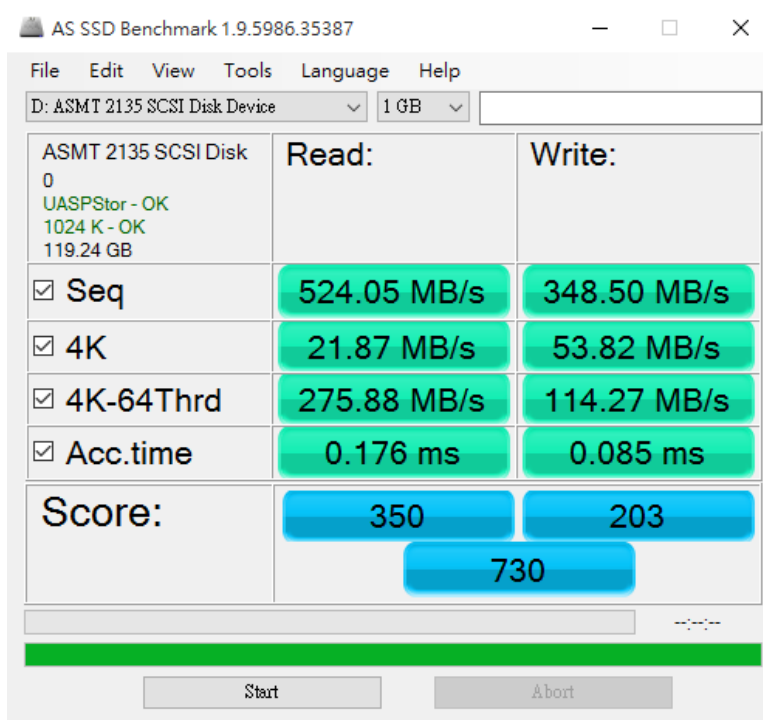
2.5.1 show [Crucial M550 CT128M550SSD1 2.5" 128GB](#) performance as below:



2.6 AS SSD Benchmark 1.9 performance test

※Benchmark (**Read & Write** by MB/s, default block size = **16MB**)

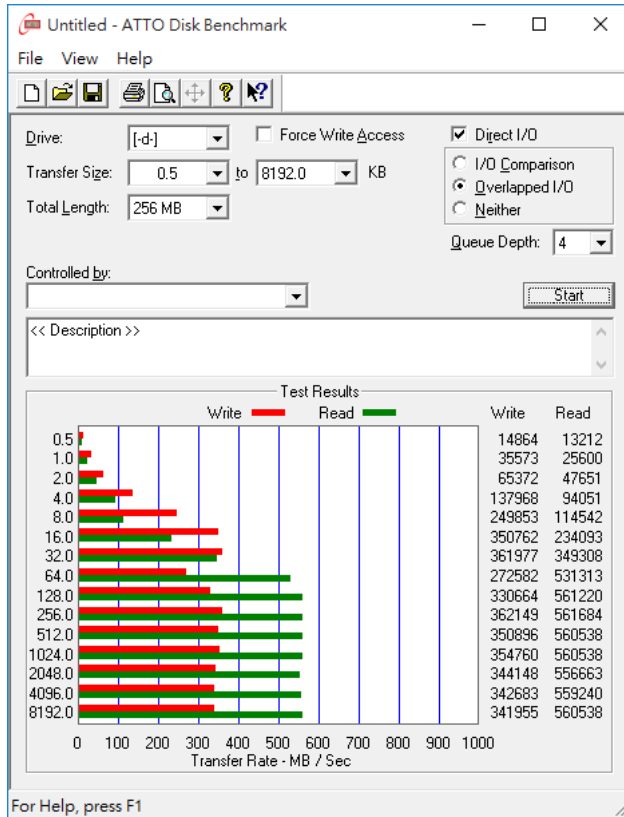
2.6.1 show [Crucial M550 CT128M550SSD1 2.5" 128GB](#) performance as below:



USB 3.1 type-C for 2.5" SATA, mSATA SSD & M.2 SSD adapter

2.7 ATTO Disk Benchmark 2.47 performance test

2.7.1 show [Crucial M550 CT128M550SSD1 2.5" 128GB](#) performance as below:



2.8 AnvilBenchmark_V110_B337

2.8.1 show [Crucial M550 CT128M550SSD1 2.5" 128GB](#) performance as below:

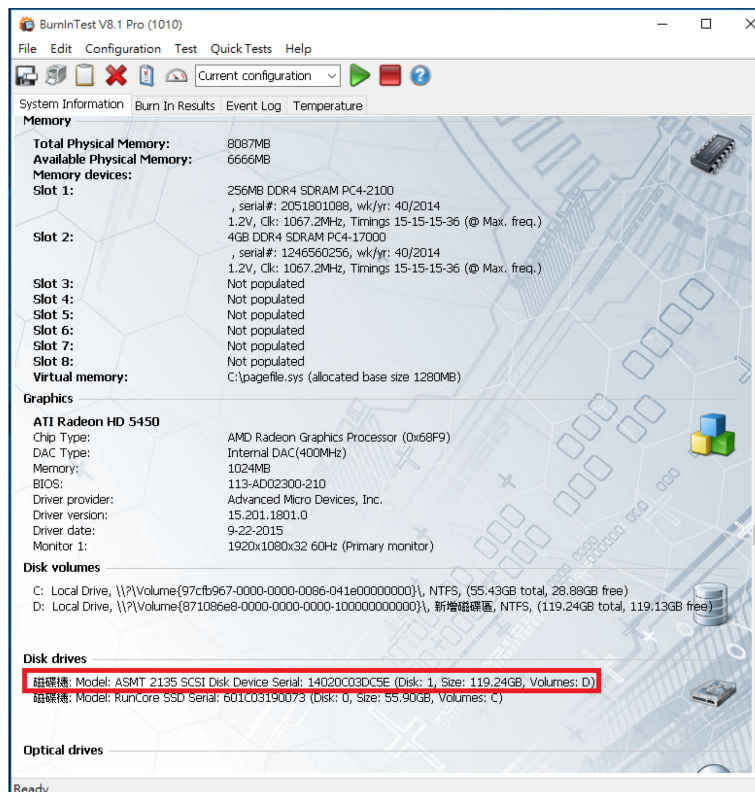
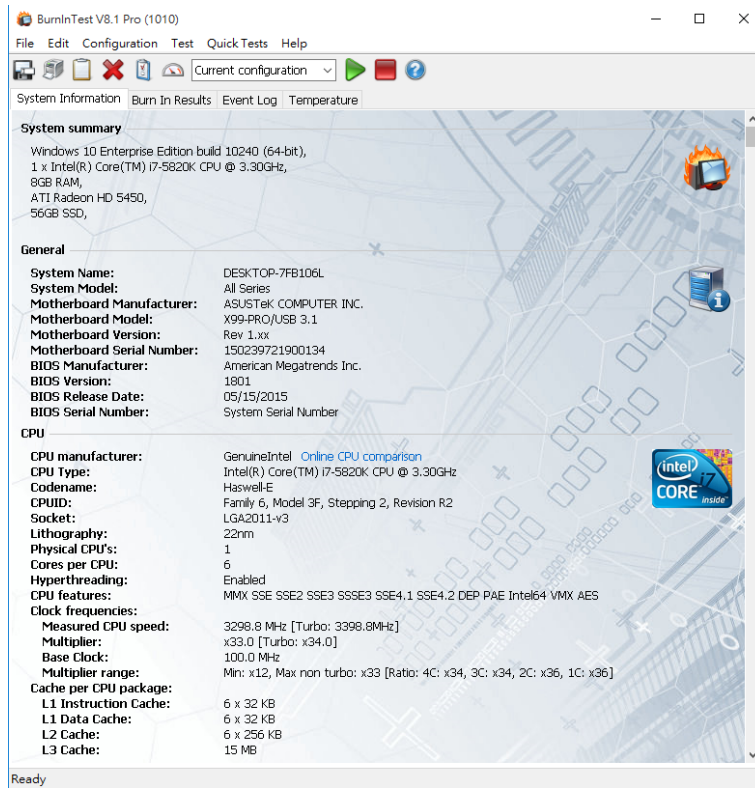


USB 3.1 type-C for 2.5" SATA, mSATA SSD & M.2 SSD adapter

3. Burn In Tests and Results

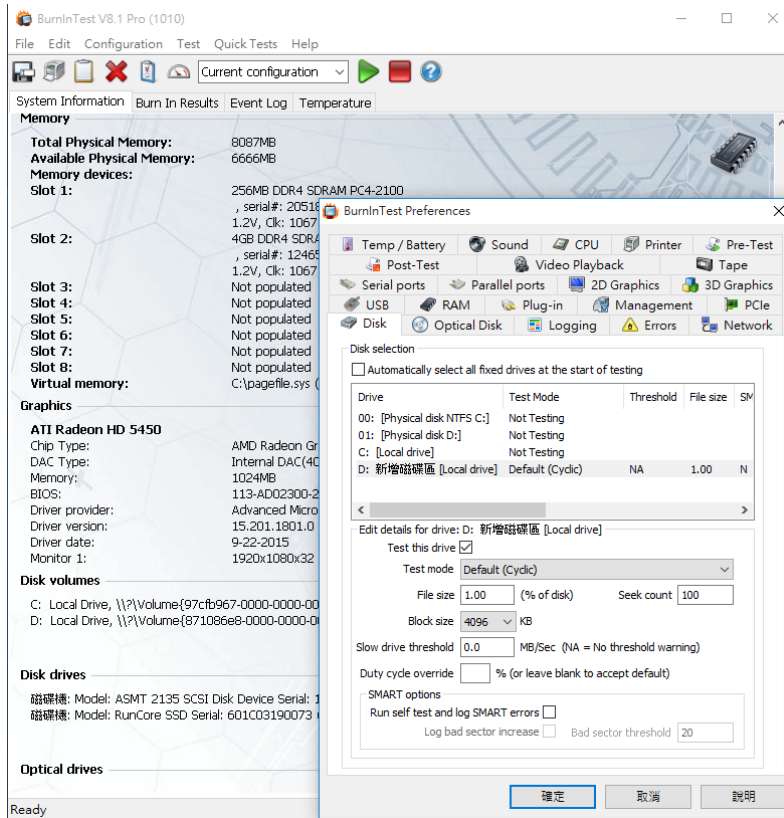
3.1 BurnInTest v8.1 Pro

3.1.1 **system information** for [Crucial M550 CT128M550SSD1 2.5" 128GB](#) as below:

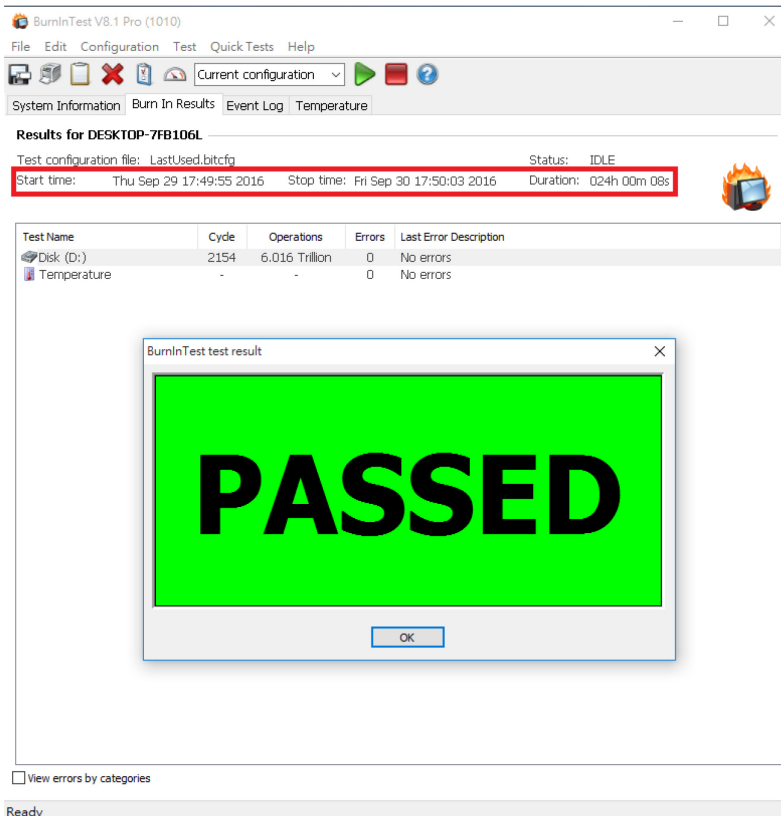


USB 3.1 type-C for 2.5" SATA, mSATA SSD & M.2 SSD adapter

3.1.2 show Disk test mode (10 ways cycle test)



3.1.3 show 24-hour Burn-in test PASSED



USB 3.1 type-C for 2.5" SATA, mSATA SSD & M.2 SSD adapter

4. Summary

- 4.1 USB 3.1 is 10Gbps Interface.
- 4.2 SATA III is 6Gbps Interface.
- 4.3 U6335A enclosure I/O performance is based on 2.5" SATA.